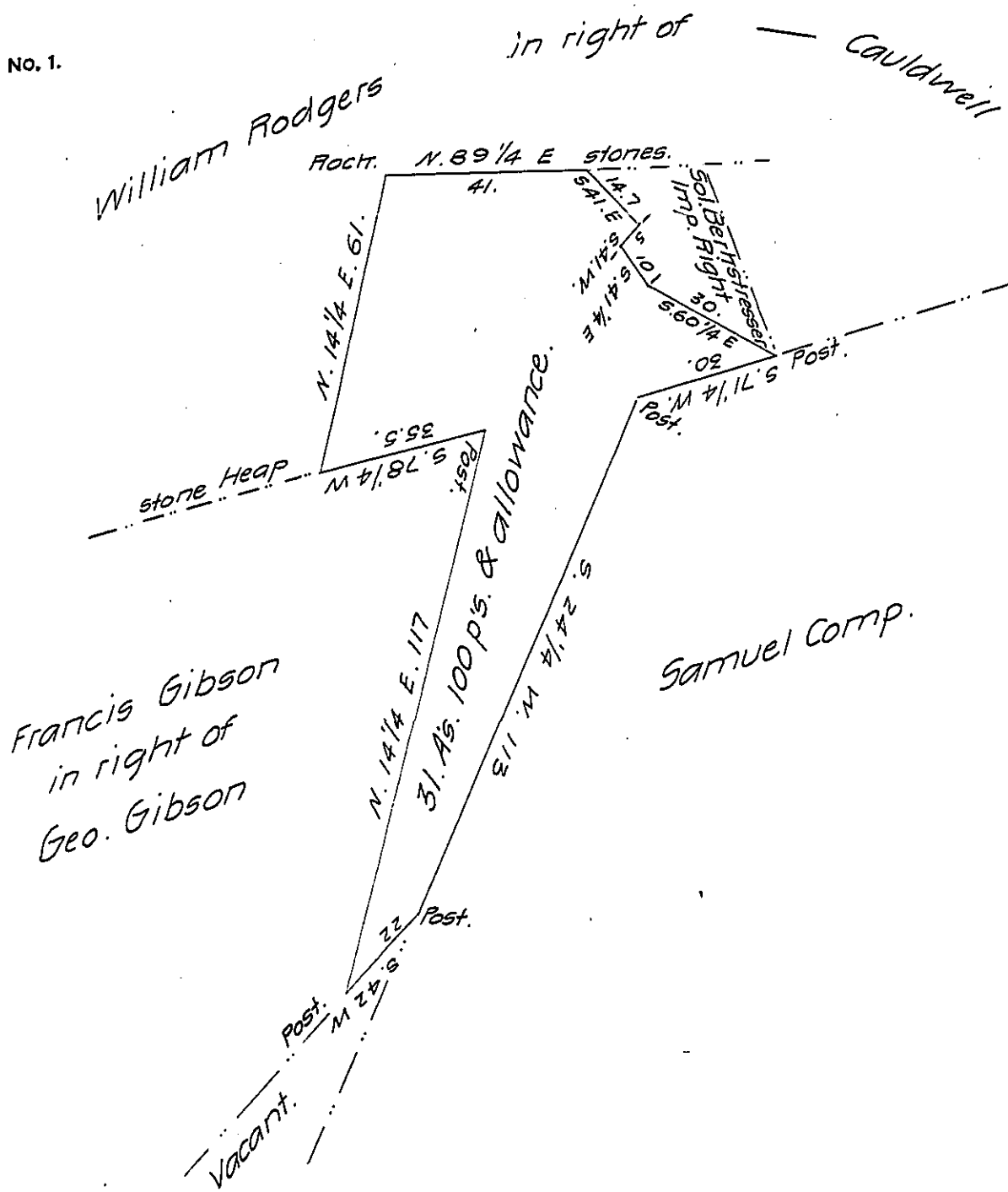


FORM NO. 1.



*Draught of a tract of land, situate in Spring township, Perry county, containing Thirty one acres and one hundred perches, and the usual allowance of six per cent. for roads, &c. Surveyed September 3d. 1860, in pursuance of a Warrant granted to Abraham Bruner, bearing date the fifth day of May A.D. 1860.*

Samuel Arnold

To Wm. H. Keim, Esq

County Surveyor

Surveyor General

Perry Co., Pa.

IN TESTIMONY that the above is a copy of the original remaining on file in the Department of Internal Affairs of Pennsylvania, made conformably to an Act of Assembly approved the 16th day of February 1833, I have hereunto set my hand and caused the Seal of said Department to be affixed at Harrisburg, this twenty-fourth day of January 1908

*Henry Howell*  
Secretary of Internal Affairs.